

# Filter Housing HD High Pressure

The HD high pressure filter housings are designed for the purification of compressed air and gases. Due to the modular design of the housings different filter elements can be used.

## Product description:

HD high pressure housings are designed for the purification of compressed air and gases in an industrial operation. The housings made out of two parts offer, due to an optimized construction, low differential pressures at high flow rates. A multitude of housings with different connections, allow to match the requirements of the application, e. g. the compressor size.

In this product series are 8 different housings available ranging from a volume flow of 18 cfm to 432 cfm, in the pressure stages 400 psig to 5800 psig (related to 14.7 psig and 68°F).

The HD high pressure housings are designed in accordance to ASME VIII, Div. 1.



## Technical data

Materials:	
Filter housing:	
to 925 psig	Aluminium
1500 to 5800 psig	Steel Stainless steel on request
Sealing:	O-ring, parting compound free, made of Perbunan

Maximum operating temperature:
+ 14°F / +176°F

Surface finish:	
to 925 psig	Aluminium anodized
from 1500 psig	Carbon Steel nickel plated

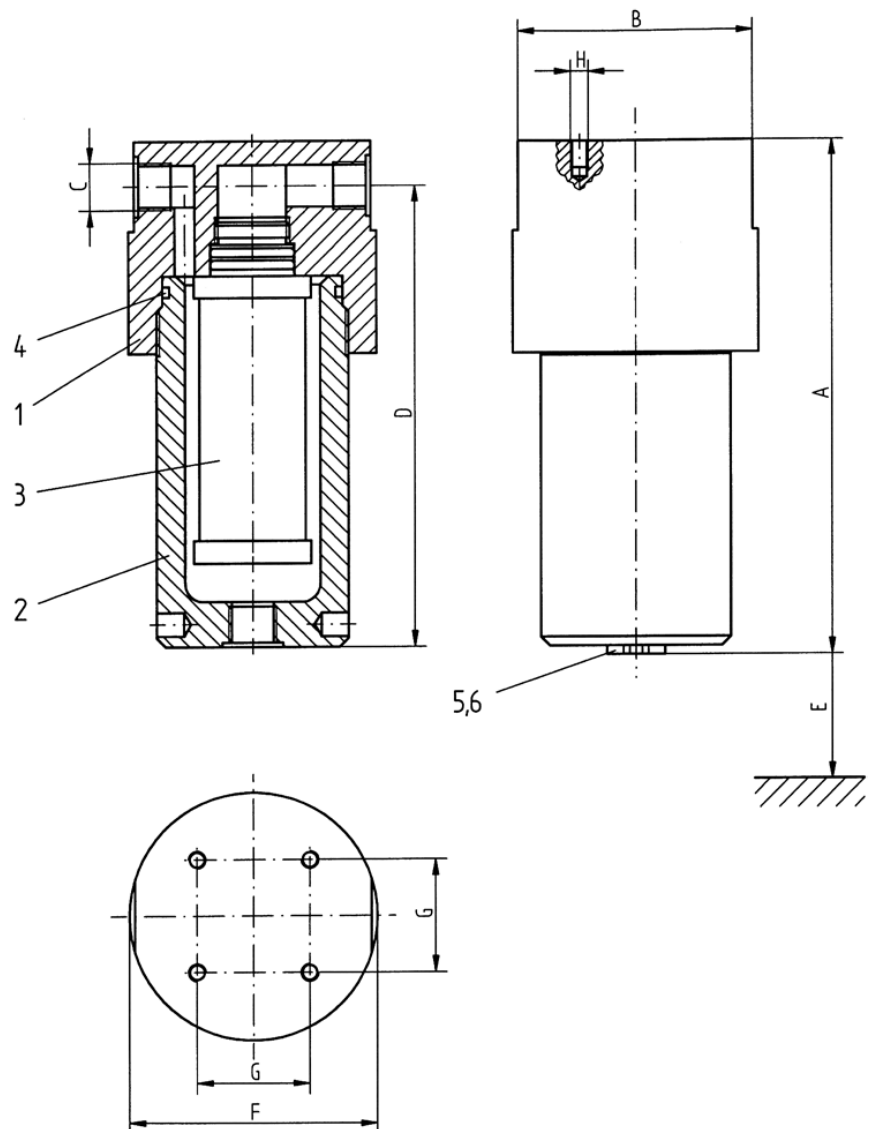
Pressure stages:	
400 psig	1500 psig
650 psig	3600 psig
925 psig	5800 psig

Connection:
1/4" to 2" FNPT

## Industrial filter HD 0003 - 0072, 400-925 psig

Pos.	Piece	Benennung
6	1	sealing
5	1	screw plug
4	1	housing O-ring
3	1	filter element
2	1	lower housing bowl
1	1	upper housing bowl

Max. operating pressure:	400, 650 925 psig
Test pressure:	600, 975 1387.5 psig
Max. operating temperature:	+14°F / +176°F
Material:	Aluminium
Paint coat:	anodized



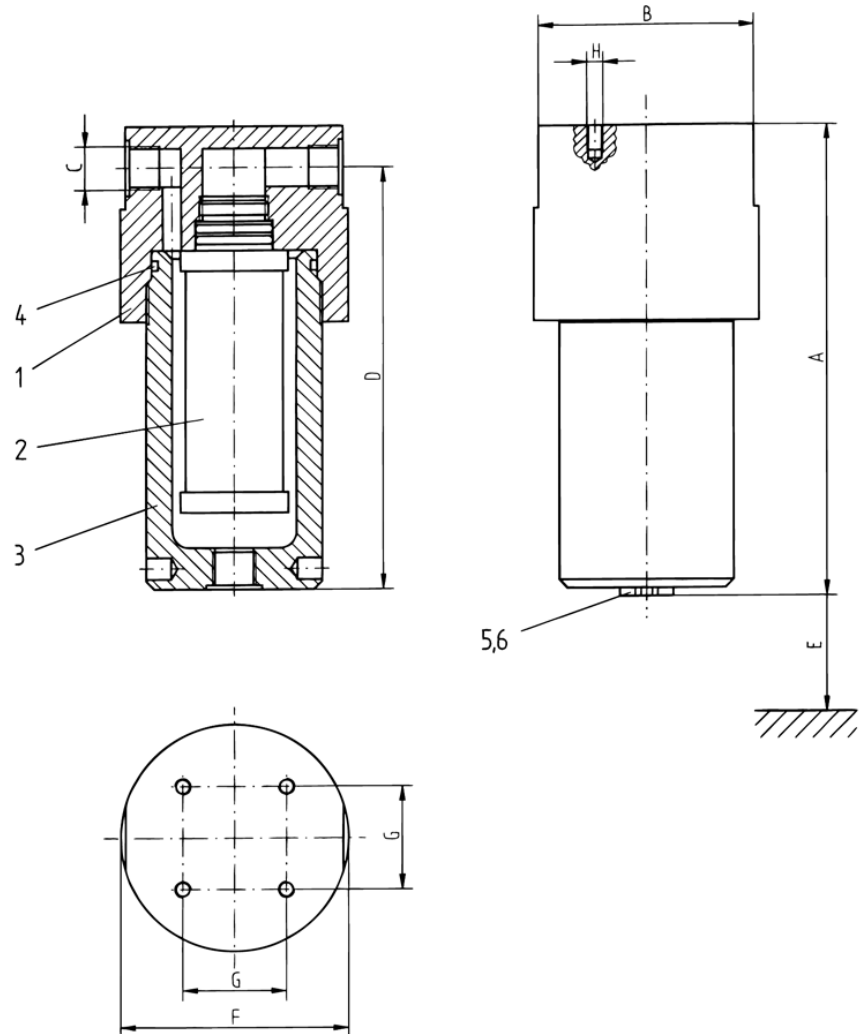
Housing size	Vol. (gal.)	Weight* (lb)	A inch	B inch	C	D inch	E inch	F ø inch	G inch	H	Element size
0003	0.05	3.5	6.5	3.4	1/4" NPT	5.7	5.1	3.5	2.0	4xM8	03/05
0006	0.05	3.5	6.5	3.4	3/8" NPT	5.7	5.1	3.5	2.0	4xM8	03/10
0012	0.11	5.7	8.1	4.1	1/2" NPT	7.3	7.5	4.3	2.0	4xM8	04/20
0018	0.13	6.2	9.0	4.1	3/4" NPT	8.1	7.5	4.3	2.0	4xM8	05/20
0027	0.17	9.5	9.2	4.7	1" NPT	8.3	7.5	5.1	2.8	4xM10	05/25
0036	0.24	10.1	11.4	4.7	1 1/4" NPT	10.0	9.8	5.1	2.8	4xM10	07/25
0048	0.45	16.3	12.4	5.9	1 1/2" NPT	11.0	9.8	6.3	3.2	4xM10	07/30
0072	0.80	41.6	15.9	7.3	2" NPT	14.4	13.3	7.9	4.3	4xM12	10/30

\* without filter element

## Industrial filter HD 0003 - 0072, 1500-5800 psig

Pos.	Piece	Benennung
6	1	sealing
5	1	screw plug
4	1	housing O-ring
3	1	filter element
2	1	lower housing bowl
1	1	upper housing bowl

Max. operating overpressure:	1500, 3600, 5800 psig
Test pressure:	2250, 5400, 8700 psig
Max. operating temperature:	+14°F / +176°F
material:	Carbon steel
paint coat:	Electroless nickel



Housing size	Vol. (gal.)	Weight* (lb)	A inch	B inch	C	D inch	E inch	F inch	G inch	H	Element size
0003	0.05	11.0	6.7	3.4	1/4" NPT	5.9	5.1	3.5	2.0	4xM8	03/05
0006	0.05	11.0	6.7	3.4	3/8" NPT	5.9	5.1	3.5	2.0	4xM8	03/10
0012	0.11	19.8	8.3	4.1	1/2" NPT	7.5	7.5	4.3	2.0	4xM8	04/20
0018	0.13	20.9	9.2	4.1	3/4" NPT	8.5	7.5	4.3	2.0	4xM8	05/20
0027	0.17	31.9	9.8	4.7	1" NPT	8.7	7.5	5.1	2.8	4xM10	05/25
0036	0.24	35.2	12.0	4.7	1 1/4" NPT	10.6	9.8	5.1	2.8	4xM10	07/25
0048	0.45	60.5	13.0	5.9	1 1/2" NPT	11.6	9.8	6.3	3.2	4xM10	07/30
0072	0.80	132.0	16.5	7.3	2" NPT	15.0	13.3	7.9	4.3	4xM12	10/30

\* without filter element