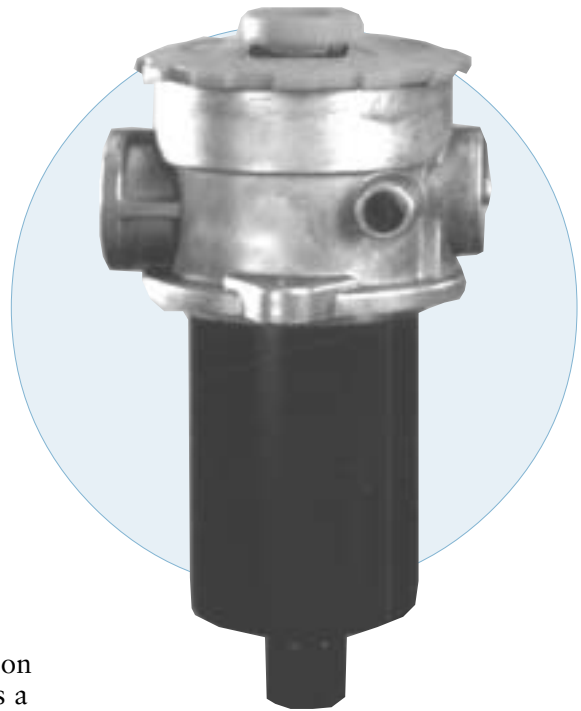


## FIK In-Tank, Low-Flow Filter

**Working Pressures to:** 145 *psi*  
1000 kPa  
10 bar

**Rated Static Burst to:** 217 *psi*  
1500 kPa  
15 bar

**Flow Range to:** 40 *gpm*  
150 l/min



## Features

FIK in-tank filters are economical units with simple screw-on covers, ideal for low pressure in-tank applications. This is a heavy-duty filter, with die cast aluminum head and steel canister.

The head (and inlet) sit above the tank, with the housing in the tank. Element flow is outside to inside.

Both electrical and visual service indicators are available. Optional air breathers are also available.

FIK filter assemblies are provided from the factory with cellulose media, and many other choices are available in replacement filters. See filter list on page 22.

### Beta Rating

- Performance to  $\beta_{10}=75$

### Porting Sizes

- SAE-8, -12, -16 and -20

### Assembly Weight

- See chart on opposite page

### Standard Bypass Ratings

- 22 *psi* / 150 kPa / 1.5 bar

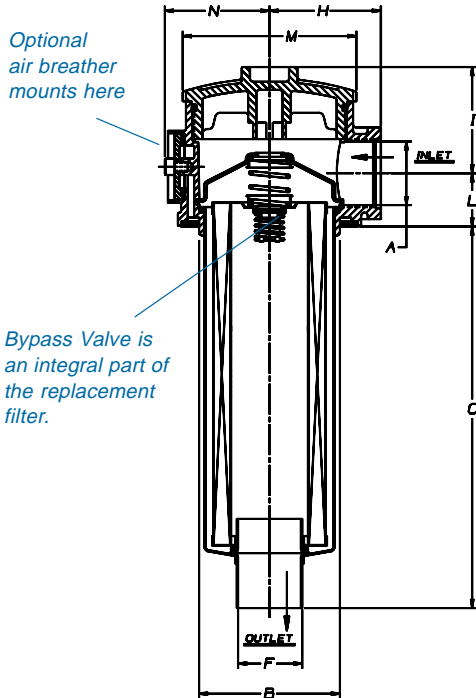
### Operating Temperatures

- -4°F to 194°F / -20°C to 90°C

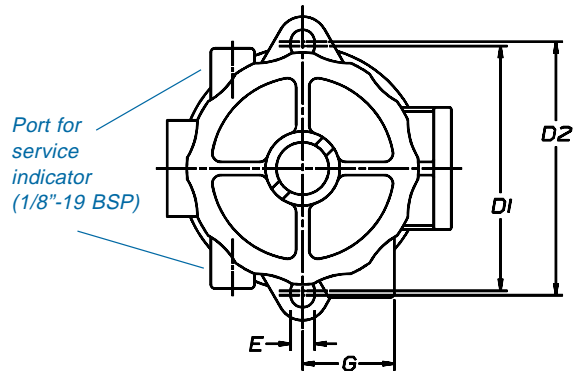
### Collapse Ratings

- 145 *psid* / 1000 kPa / 10 bar

**Assembly - Side View**



for:  
Return Lines  
Side Loop Systems  
Fluid Conditioning Systems  
Process Systems  
Case Drains  
Cooling Circuits



**Head - Top View**

All dimensions above are shown in inches [millimeters]

FIK Model	K030319	K040811	K040812	K040813
A	1/2-inch SAE O-Ring	3/4-inch SAE O-Ring	1-inch SAE O-Ring	1 1/4-inch SAE O-Ring
B	2.4 in. 60 mm	3.4 in. 86 mm	3.4 in. 86 mm	3.4 in. 86 mm
C	7.2 in. 184 mm	4.1 in. 104 mm	5.9 in. 150 mm	9.3 in. 235 mm
D 1	3.3 in. 84 mm	4.4 in. 112 mm	4.4 in. 112 mm	4.4 in. 112 mm
D 2	3.46 in. 88 mm	4.56 in. 116 mm	4.56 in. 116 mm	4.56 in. 116 mm
E	0.4 in. 10 mm	0.43 in. 11 mm	0.43 in. 11 mm	0.43 in. 11 mm
F	0.87 in. 22 mm	1.1 in. 28 mm	1.1 in. 28 mm	1.6 in. 40 mm
G	~	0.47 in. 42 mm	0.47 in. 42 mm	0.47 in. 42 mm
H	1.9 in. 48 mm	2.67 in. 68 mm	2.67 in. 68 mm	2.67 in. 68 mm
I	1.85 in. 47 mm	2.56 in. 65 mm	2.56 in. 65 mm	2.56 in. 65 mm
L	0.82 in. 21 mm	1.26 in. 32 mm	1.26 in. 32 mm	1.26 in. 32 mm
M	2.9 in. 74 mm	4.2 in. 106 mm	4.2 in. 106 mm	4.2 in. 106 mm
N	2.4 in. 60 mm	3.4 in. 86 mm	3.4 in. 86 mm	3.4 in. 86 mm
Weight	1.8 lbs 0.8 kg	2.1 lbs .95 kg	3.2 lbs 1.45 kg	4.1 lbs 1.86 kg

# FIK Assemblies & Service Parts



## Service Indicators

**Pressure Gauge  
P171956**

-14.5 to 72 psi  
-1 to +5 bar



**AC/DC Electrical Indicator  
P171966**

17 psi  
1.2 bar



**Visual Indicator  
P171958**

17 psi  
1.2 bar



## FIK Filter Assemblies

Port Size	Bypass Rating	Service Indicator	Beta Rating	FIK Assembly Model	Provided with this Element
SAE-8 O-Ring	22 psi / 150 kPa / 1.5 bar	Port Available	$\beta_{10} = 2$	K030319	P171839 cellulose
SAE-12 O-Ring	22 psi / 150 kPa / 1.5 bar	Port Available	$\beta_{10} = 2$	K040811	P171527 cellulose
SAE-16 O-Ring	22 psi / 150 kPa / 1.5 bar	Port Available	$\beta_{10} = 2$	K040812	P171533 cellulose
SAE-20 O-Ring	22 psi / 150 kPa / 1.5 bar	Port Available	$\beta_{10} = 2$	K040813	P171840 cellulose

## Replacement Element Choices

Media Type	Beta Rating	Fits Assembly Model:			
		K030319	K040811	K040812	K040813
Synteq®	$\beta_{10} = 75$	P171845	P171525	P171531	P171846
Synteq®	$\beta_{25} = 75$	P171842	P171526	P171532	P171843
Cellulose	$\beta_{10} = 2$	P171839	P171527	P171533	P171840
Cellulose	$\beta_{25} = 2$	P171836	P171528	P171534	P171837
Wiremesh	60 Absolute	P171833	P171529	P171535	P171834
Wiremesh	90 Absolute	P171830	P171524	P171530	P171831



Optional air breather is easily installed on filter head.

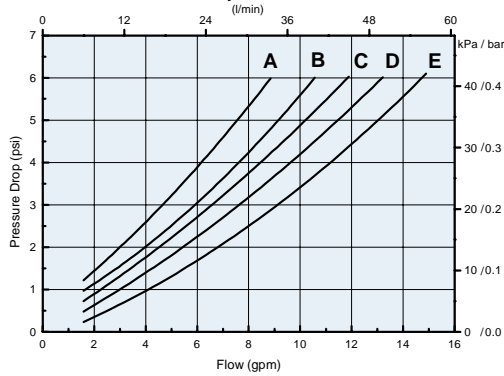
## Optional Air Breathers

Part Number	Beta Rating	Fits Assembly Models:
P172434	10 $\mu$	K040811, K040812, K040813
P173330	10 $\mu$	K030319

# Performance Data

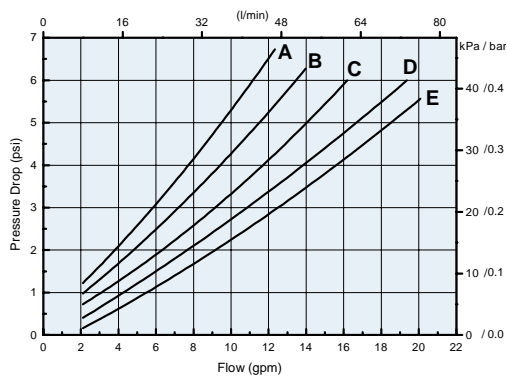
For a full explanation of how our performance curves were derived, see page 94.

## K030319 Assembly



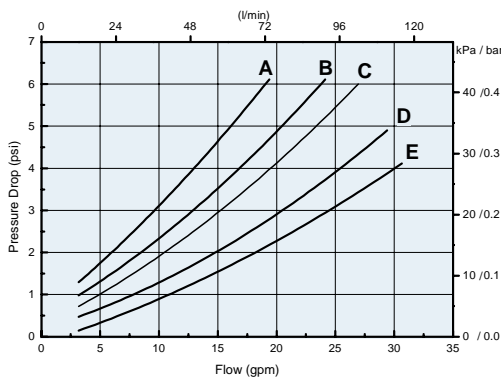
- Service Element Part Numbers
- A. P171845 (Synthetic)
  - B. P171842 (Synthetic)
  - C. P171839\* (Cellulose)
  - D. P171836 (Cellulose)
  - E. P171833, P171830 (Wiremesh)

## K040811 Assembly



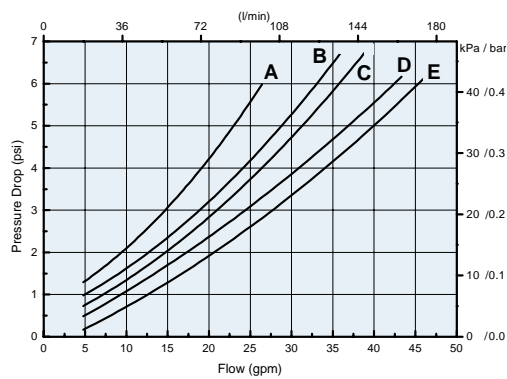
- Service Element Part Numbers
- A. P171525 (Synthetic)
  - B. P171526 (Synthetic)
  - C. P171527\* (Cellulose)
  - D. P171528 (Cellulose)
  - E. P171529, P171524 (Wiremesh)

## K040812 Assembly



- Service Element Part Numbers
- A. P171531 (Synthetic)
  - B. P171532 (Synthetic)
  - C. P171533\* (Cellulose)
  - D. P171534 (Cellulose)
  - E. P171535, P171530 (Wiremesh)

## K040813 Assembly



- Service Element Part Numbers
- A. P171846 (Synthetic)
  - B. P171843 (Synthetic)
  - C. P171840\* (Cellulose)
  - D. P171837 (Cellulose)
  - E. P171834, P171831 (Wiremesh)

\*Shipped with in-stock assembly.



### FIK Application

FIK in-tank return filters are used on small reservoirs to clean the oil before it goes into vehicles. Shown here, the P171956 pressure gauge and P173330 air breather are installed on the filter heads.