

LPS04, SP15/25 Spin-On Filters

Maximum Working Pressures to:	150 <i>psi</i> 1034 kPa 10.3 bar
--------------------------------------	--

Rated Static Burst to:	375 <i>psi</i> 2590 kPa 25.9 bar
-------------------------------	--

Flow Ranges to:	30 <i>gpm</i> 114 l/min
------------------------	----------------------------



Features

The LPS04 and SP15/25 series are economical, low pressure filters with spin-on convenience and a wide range of cleanliness ratings. Filters are available with the bypass ratings of your choice—*25 psi*, *15 psi*, *5 psi* or no bypass.

Take advantage of our Mix 'n Match system of in-stock heads & elements, so you can get exactly what you need!

Likewise, choose the media type and configuration that's best for your application. Options include Donaldson's exclusive Synteq®, natural fiber cellulose, stainless steel wiremesh or water absorbing media.

Beta Rating

- Performance to $\beta_{9(c)}=1000$

Porting Sizes

- ½", ¾" NPT or ½", ¾" O-Ring

Replacement Filter Lengths

- | | |
|-----------------|---------------|
| • Synteq® | 5.35" / 136mm |
| | 7.87" / 200mm |
| • Cellulose | 5.35" / 136mm |
| | 7.87" / 200mm |
| • Wiremesh | 5.35" / 136mm |
| • Water Removal | 5.35" / 136mm |

Standard Bypass Ratings

- 25 *psi* / 172.5 kPa / 1.7 bar
- 15 *psi* / 97 kPa / .97 bar
- 5 *psi* / 34.5 kPa / .34 bar
- No Bypass

Assembly Weight

- 2.2 lbs / 1 kg (approx.)

Operating Temperatures

- -20°F to 225°F / -27°C to 107°C

Collapse Ratings

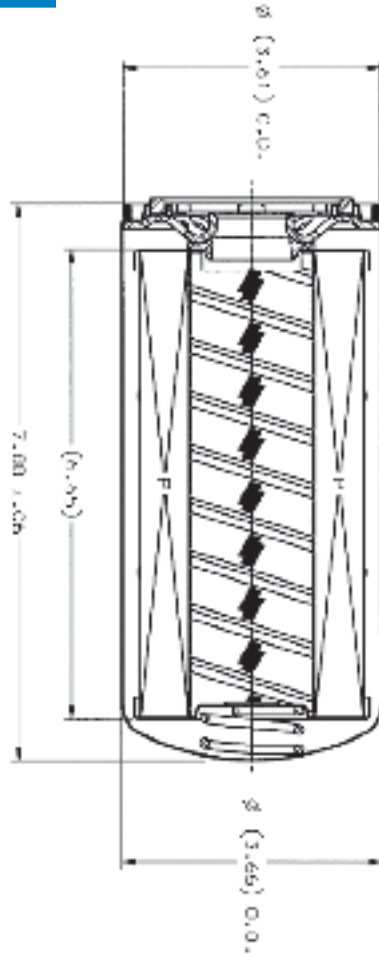
- 100 *psid* / 690 kPa / 6.9 bar (standard)

Element Dimensions

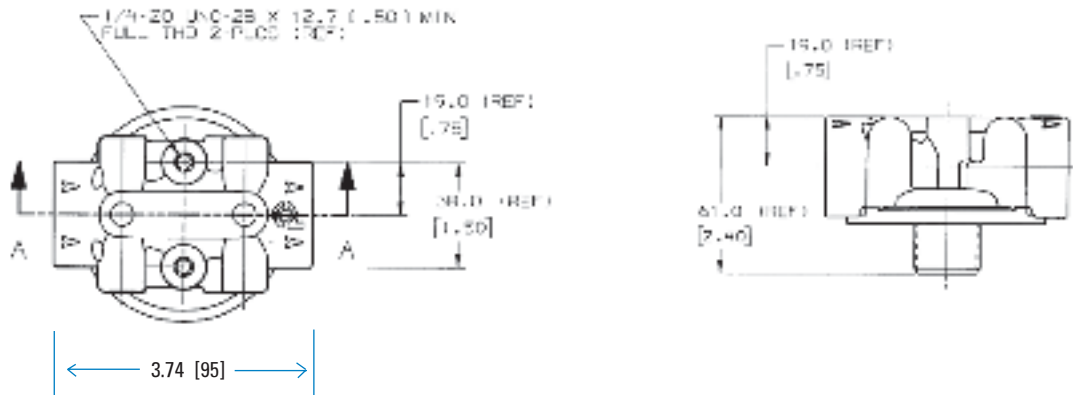
for: In-Plant Systems
 Ag Equipment
 Mining
 Construction
 Logging

Low Pressure Filters

*For available
 element lengths,
 see page 14.*



Head Dimensions



● All dimensions above are shown in inches [millimeters]

LPS04 Components

Element Choices

Media Type	Beta _{x(c)} =200 Rating	Beta _{x(c)} =1000 Rating	Length (in./mm)	Donaldson Part No.	Comments
Cellulose Media # 3		24	5.35/136	P565061	
Cellulose Media # 10		23	5.35/136	P562198	
Cellulose Media # 10		23	7.87/200	P565059	
Synteq Media # 2		9	7.87/200	P564357	Synthetic Media
Synteq Media # 2-1/2		10	5.35/136	P560693	Synthetic Media
Synteq Media # 2-1/2		10	7.87/200	P179089	Synthetic Media
Synteq Media # 9		23	5.35/136	P560694	Synthetic Media
Synteq Media # 1		6	5.35/136	P564967	Synthetic Media
Cellulose Media # 25	32		5.35/136	P562199	
Cellulose Media # 25	32		7.87/200	P565060	
Water absorbing Media	32		5.35/136	P565062	Absorbs Approx. 6 oz/170 ml of water @ 20 psid
Wiremesh Media # 149	150		5.35/136	P550274	

Head Choices for LPS04 and SP15/25

Port Size	Bypass Range	Gauge ports (drill, tap, plug)	Gauge Port Location	DCI Part No.
½" NPT	15 psi / 103.4 kPa / 1.34 bar	(2) 1/8" NPT	upstream side	P563288
¾" NPT	25 psi / 172.5 kPa / 1.72 bar	(2) 1/8" NPT	upstream side	P561131
¾" NPT	5 psi / 34.5 kPa / .34 bar	(2) 1/8" NPT	downstream side	P561132
¾" NPT	25 psi / 172.5 kPa / 1.72 bar	none	na	P561134
¾" NPT	5 psi / 34.5 kPa / .34 bar	none	na	P561135
¾" NPT	none	none	na	P561136
¾" NPT	15 psi / 103.4 kPa / 1.34 bar	none	na	P563278
SAE-12	none	none	na	P561133
SAE-12	none	(1) SAE-4	upstream side, LH	P561137
SAE-12	5 psi / 34.5 kPa / .34 bar	none	na	P561140
SAE-12	25 psi / 172.5 kPa / 1.72 bar	none	na	P561141
SAE-12	15 psi / 103.4 kPa / 1.34 bar	none	na	P563279
SAE-12	25 psi / 172.5 kPa / 1.72 bar	(2) 1/8" NPT	upstream side	P563280
SAE-12	15 psi / 103.4 kPa / 1.34 bar	none	M6 mtg. Thrds	P563287
SAE-8	25 psi / 172.5 kPa / 1.72 bar	none	na	P561138



Mix 'n Match...

Donaldson's Mix 'n Match system provides the great performance and functional advantages of custom-engineered filters with the convenience and speedy delivery of in-stock parts. Choose your options and build a filter model to suit your specifications.



Filter Service Gauges - Visual Indicators

Donaldson Part No.	Pressure Range	Use With Bypass Valve Rating	Type
P563978	5 to 30 psi field adj.*	15 psi / 103.4 kPa / 1.34 bar or 25 psi / 172.5 kPa / 1.72 bar or No Bypass	Return indicator, electrical
P563979	-5 to 15 in Hg field adj.*	5 psi / 34.5 kPa / .34 bar or No Bypass	Suction indicator, electrical
P563296	0 to 100 psi	15 psi / 103.4 kPa / 1.34 bar or 25 psi / 172.5 kPa / 1.72 bar or No Bypass	Return indicator, numeric scale
P563297	0 to 100 psi	15 psi / 103.4 kPa / 1.34 bar Bypass	Return indicator, color coded
P563298	0 to 100 psi	25 psi / 172.5 kPa / 1.72 bar or No Bypass	Return indicator, color-coded
P563299	0 to -20 Hg	5 psi / 34.5 kPa / .34 bar or No Bypass	Suction indicator, numeric scale



Low Pressure Filters

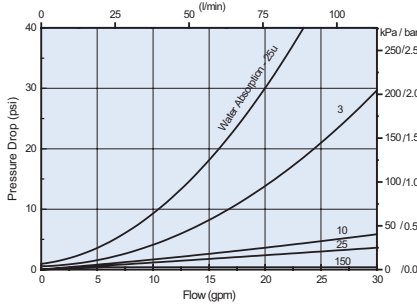
Notes

* NOT PRESET: Setting adjustable for desired application

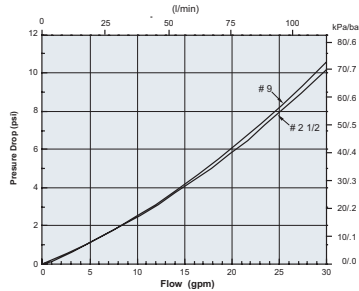
Performance Data

For a full explanation of how our performance curves were derived, see page 150.

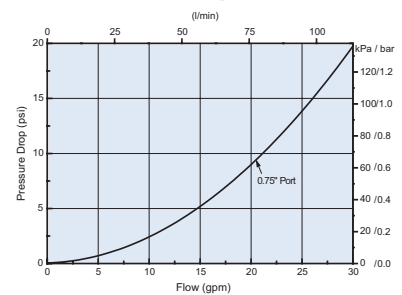
LPS04 Filter Only
(Cellulose Media, 5.35"/136mm)



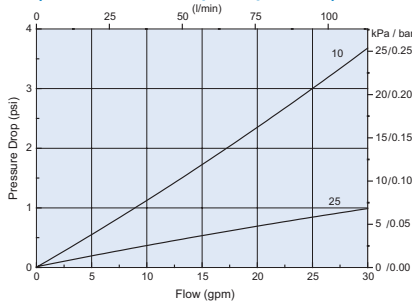
LPS04 Filter Only
(Synthetic Media, 5.35"/136mm)



LPS04 Head Only



LPS04 Filter Only
(Cellulose Media, 7.87"/200mm)



LPS04 Filter Only
(Synthetic Media, 7.87"/200mm)

